



SAND ● ● ● ● ● ●  
DUNE<sup>®</sup>  
FULL BODY

800x800mm  
600x1200mm  
600x600mm

DOUBLE  
CHARGE



ICE  
BERG  
EXTREME WHITE



# NEXT GEN. TECHN OLOGY



## 1 . Calibro Planer Machine

This machine checks surface planarity and squaring of tiles so we can provide tiles with zero bend.



## 2 . Spray Drier

We prepare our body using Sacmi spray drier. This machine helps us to prepare vitrified body with zero batch variation. It is energy efficient and also keeps a tab on emission of toxics in atmosphere.



## 3 . Latest Press

Green Tiles are formed using Sacmi press. This is the most advanced hydraulic pressing system in world.



## 4 . Large Ware house

Storage of finished products on metal racks to prevent breakage of tiles in warehouse.



## 5 . QC Planometer

Result of advanced Italian technology, imparts highest quality attributes to the product making it a flawless creation.

**Revolutionary  
Technology.**

**Produce surfaces  
that combine  
Excellent aesthetic  
Quality**

**Outstanding  
Technical  
Performance.**



J O U R N E Y



O F

N A T U R E



# FULL BODY

800x  
800  
mm

Also Available  
395x800mm

SAND ● ● ● ● ● ●  
DUNE  
FULL BODY





KOTA



KOTA CRYSTAL



KOTA MATT



KOTA RUSTIC



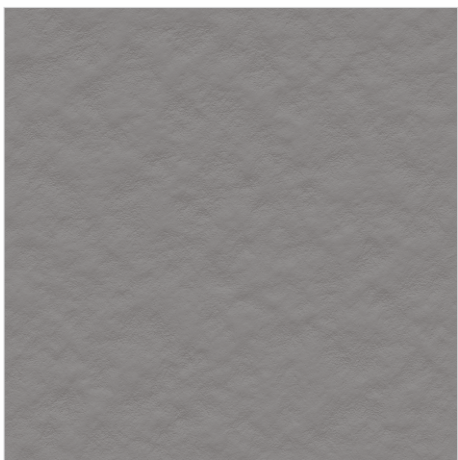
GREY



GREY CRYSTAL



GREY MATT



GREY RUSTIC



LOW WATER ABSORPTION



HIGH STRENGTH



ZERO MAINTENANCE

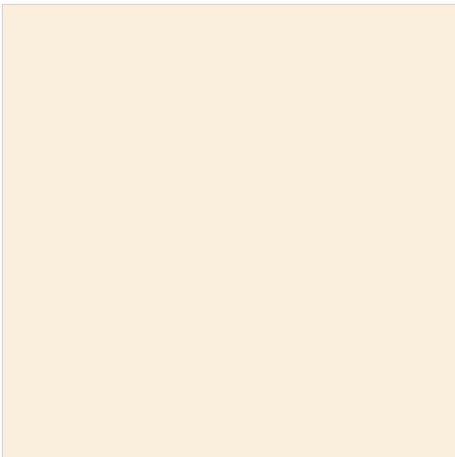


IMPACT RESISTANCE

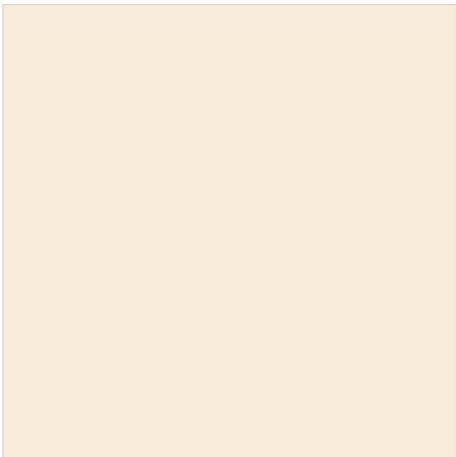




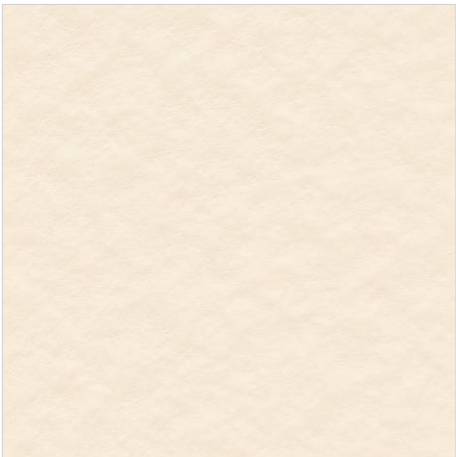
CREMA



CREMA CRYSTAL



CREMA MATT



CREMA RUSTIC





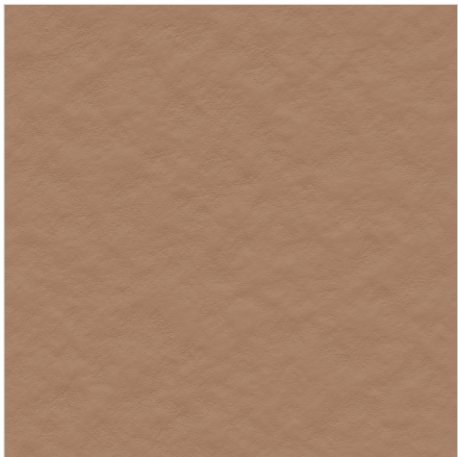
BROWN



BROWN CRYSTAL



BROWN MATT



BROWN RUSTIC





neora

TAN



TAN CRYSTAL

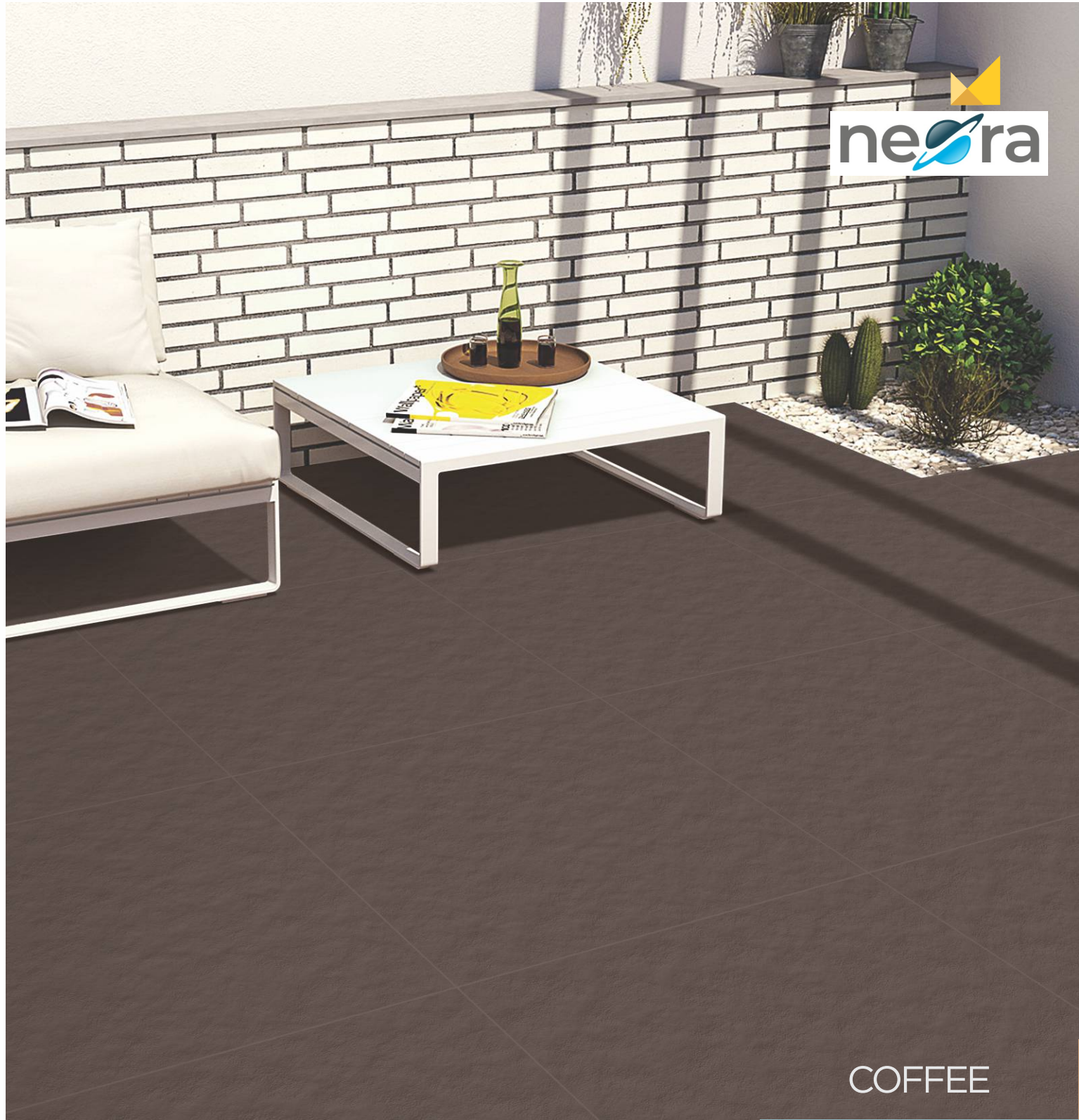


TAN MATT



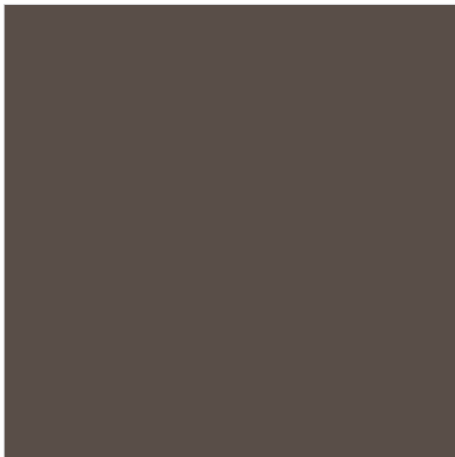
TAN RUSTIC



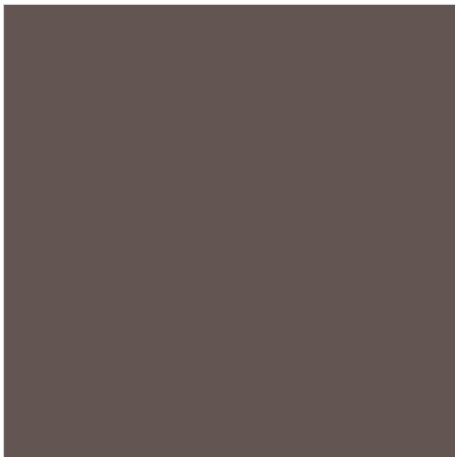


COFFEE

13



COFFEE CRYSTAL



COFFEE MATT



COFFEE RUSTIC



LOW WATER ABSORPTION



HIGH STRENGTH



ZERO MAINTENANCE



IMPACT RESISTANCE



JET BLACK



JET BLACK CRYSTAL



JET BLACK MATT



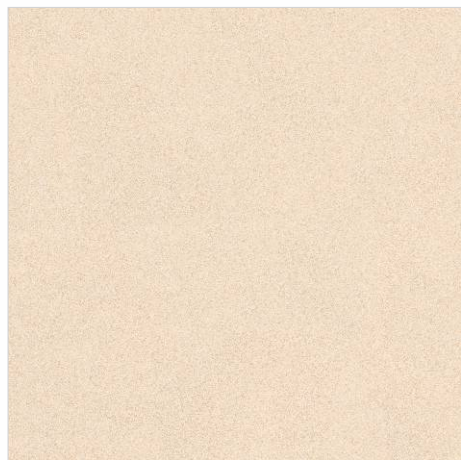
JET BLACK RUSTIC



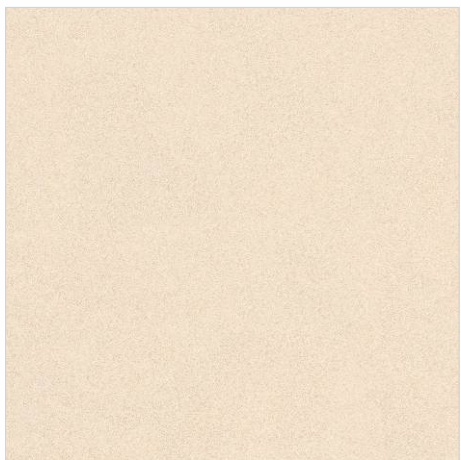


BEIGE

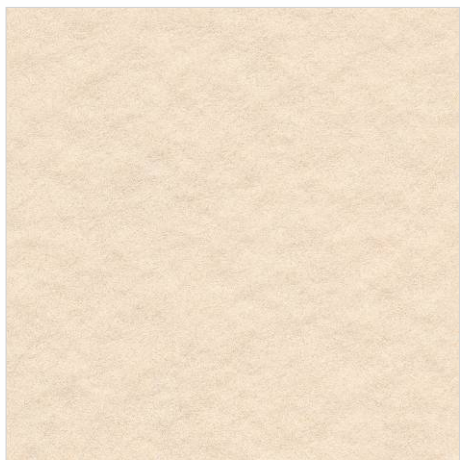
15



BEIGE CRYSTAL



BEIGE MATT



BEIGE RUSTIC



LOW WATER ABSORPTION



HIGH STRENGTH



ZERO MAINTENANCE

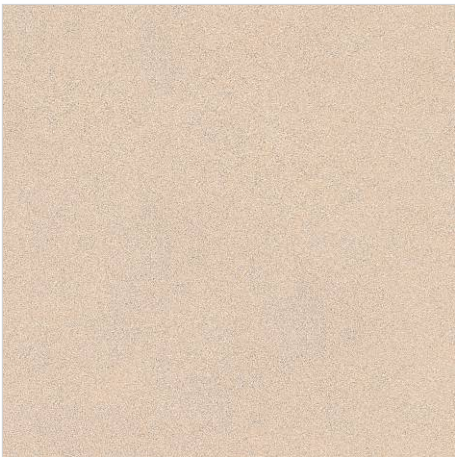


IMPACT RESISTANCE

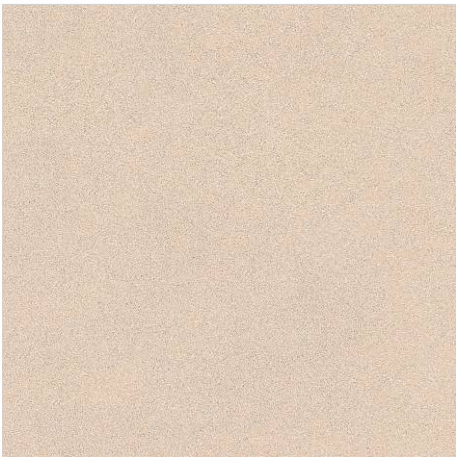




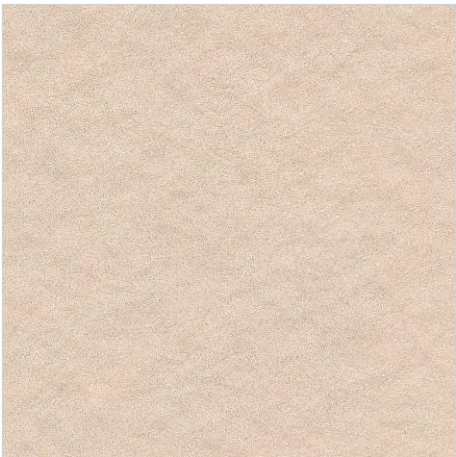
BAHAMA



BAHAMA CRYSTAL

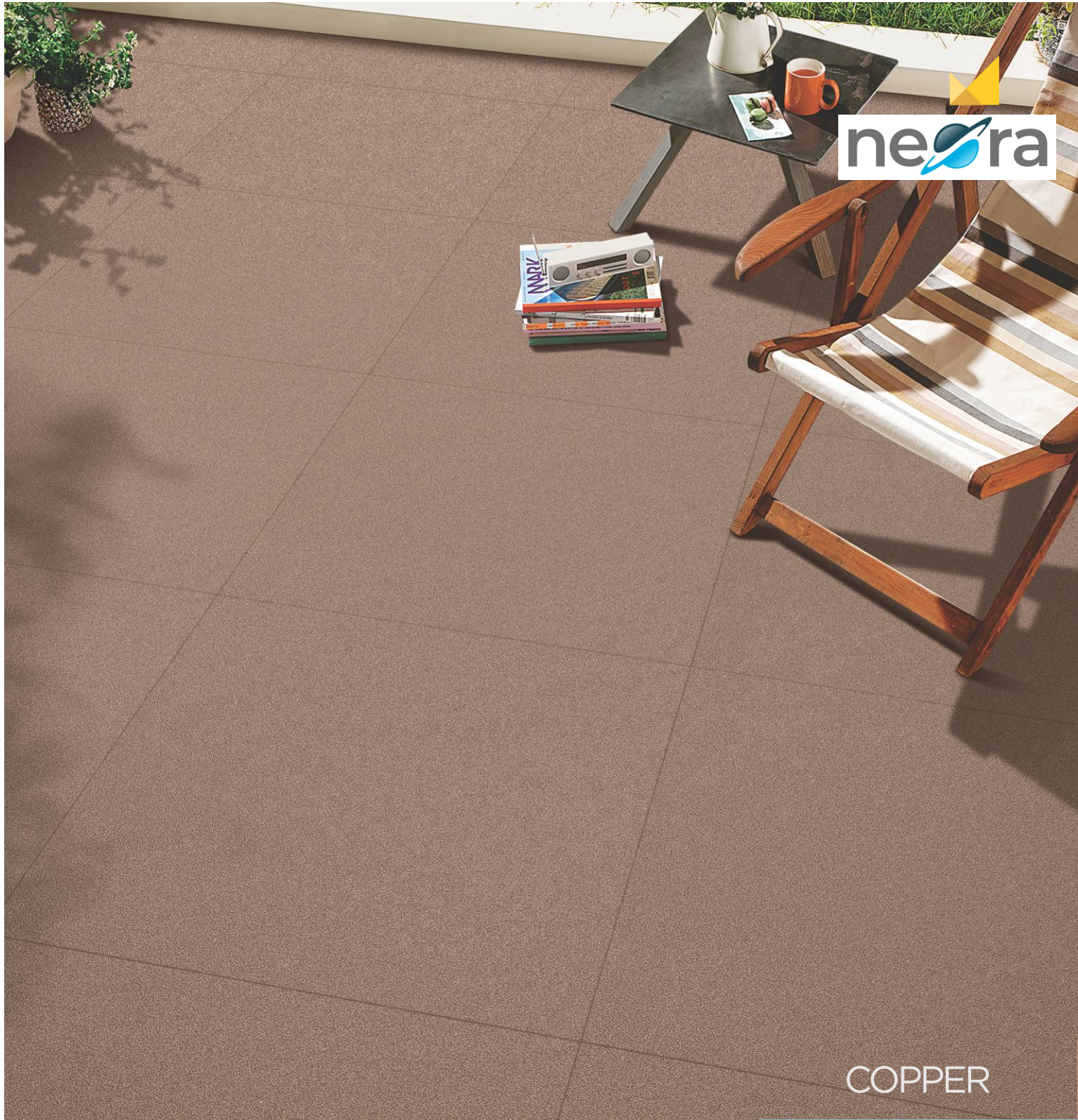


BAHAMA MATT

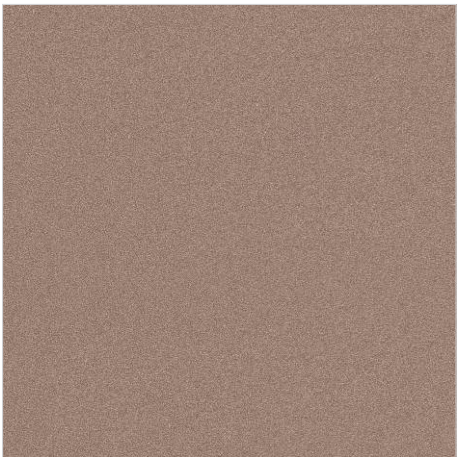


BAHAMA RUSTIC

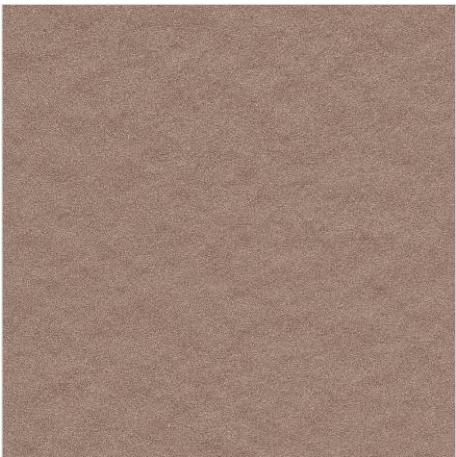




COPPER CRYSTAL



COPPER MATT



COPPER RUSTIC



LOW WATER ABSORPTION



HIGH STRENGTH

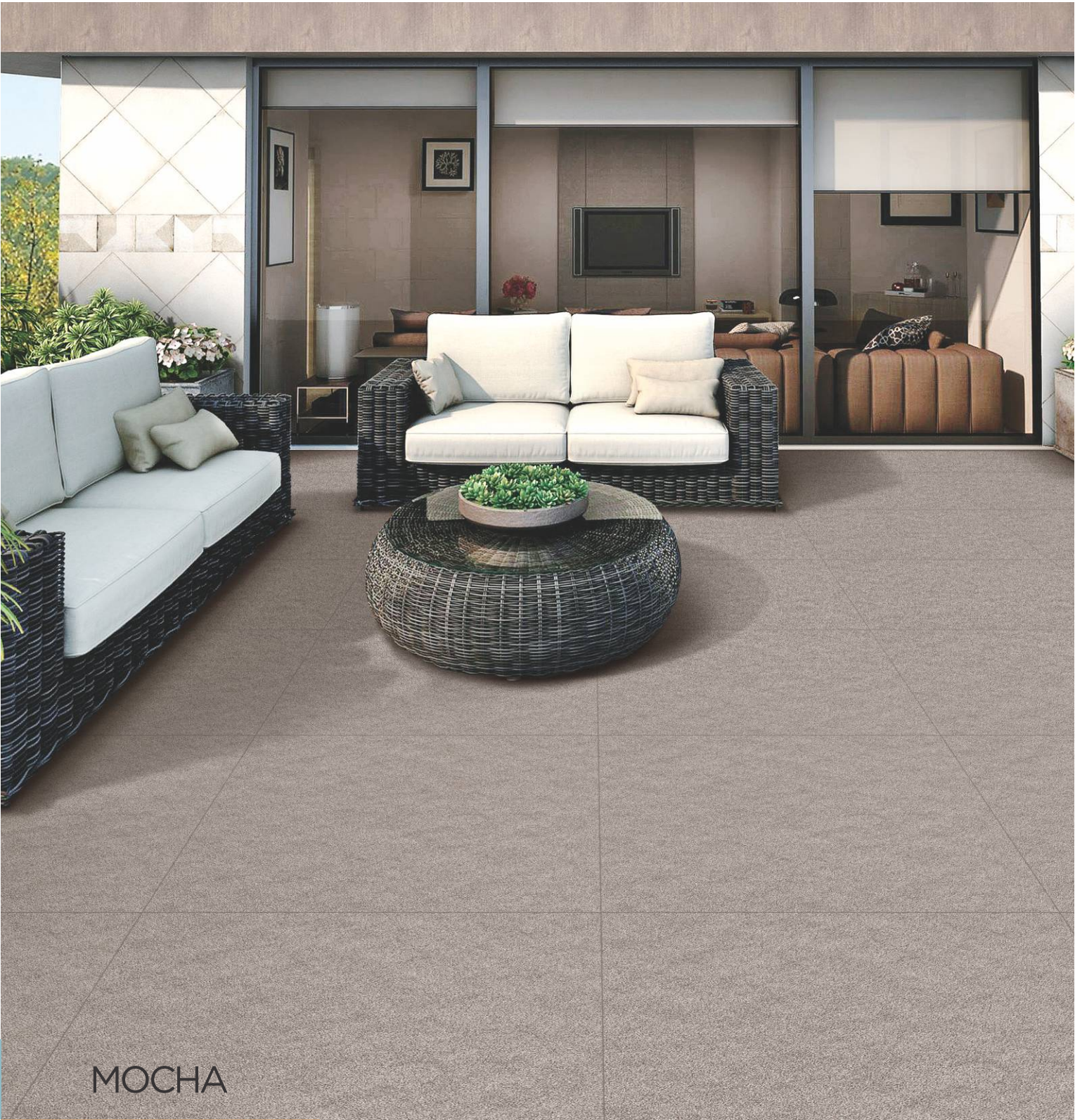


ZERO MAINTENANCE



IMPACT RESISTANCE

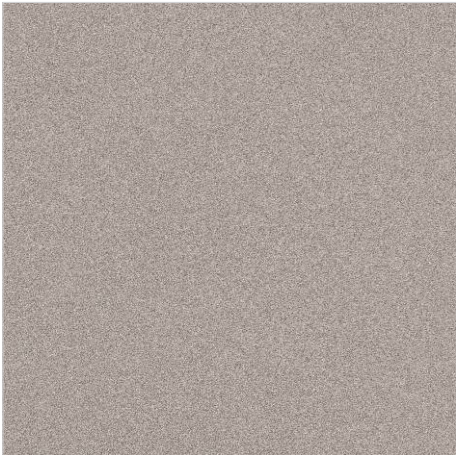




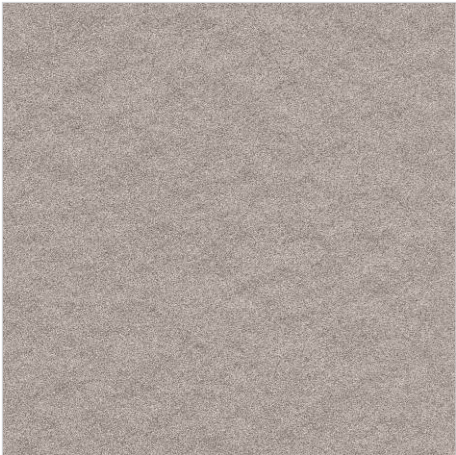
MOCHA



MOCHA CRYSTAL

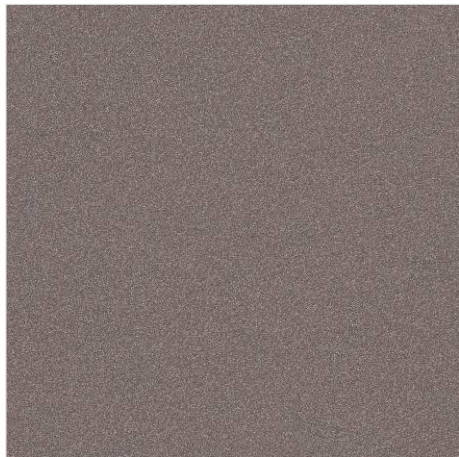


MOCHA MATT

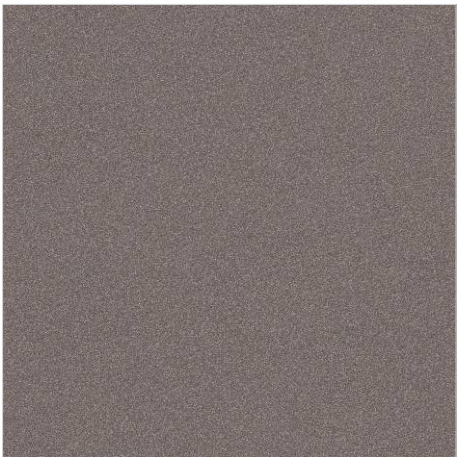


MOCHA RUSTIC

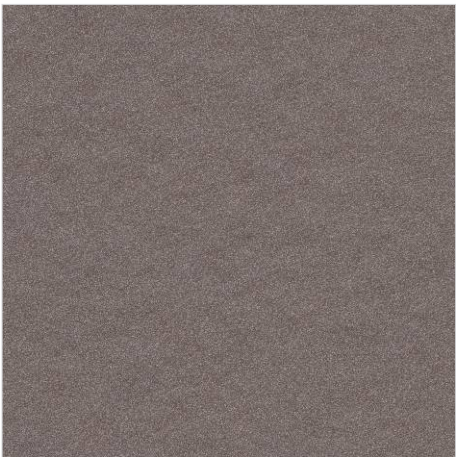




CHOCO CRYSTAL



CHOCO MATT



CHOCO RUSTIC



LOW WATER ABSORPTION



HIGH STRENGTH



ZERO MAINTENANCE

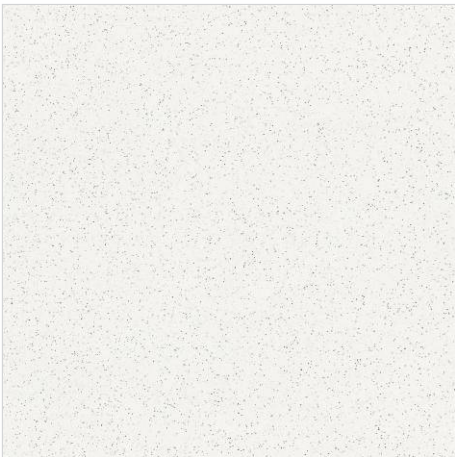


IMPACT RESISTANCE





QUARTZ



QUARTZ CRYSTAL

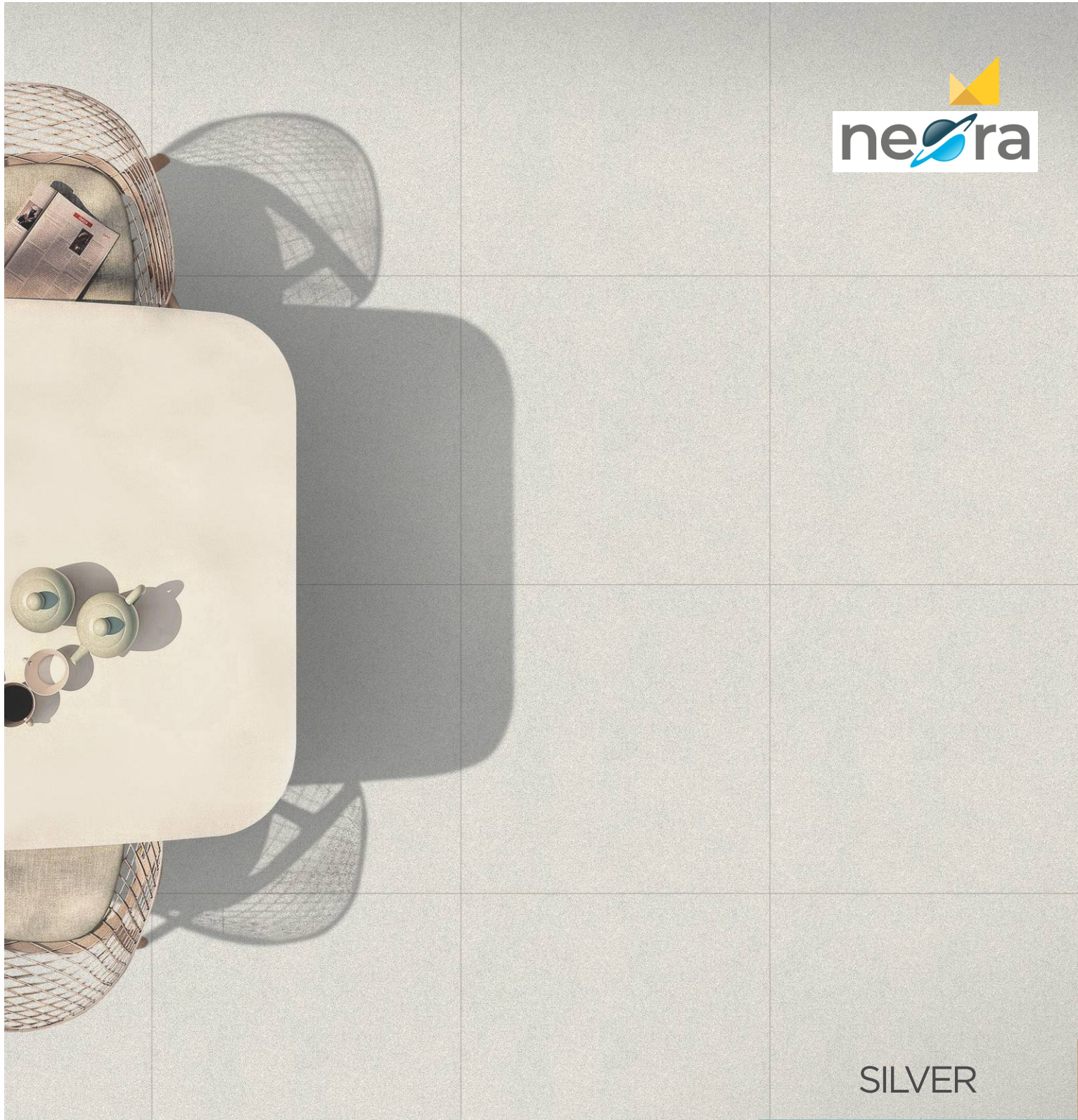


QUARTZ MATT

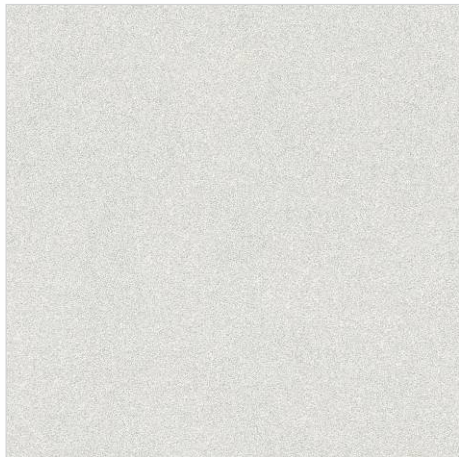


QUARTZ RUSTIC

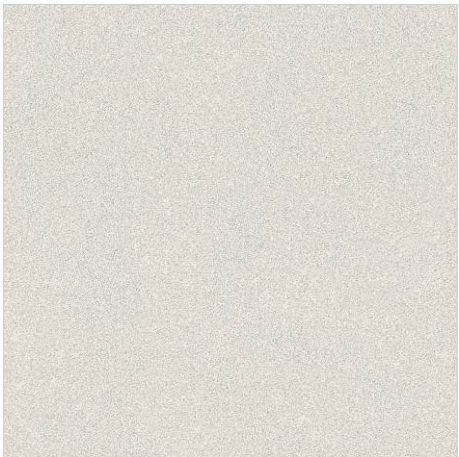




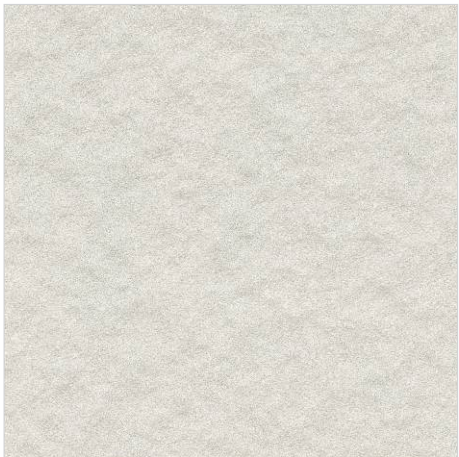
SILVER



SILVER CRYSTAL



SILVER MATT

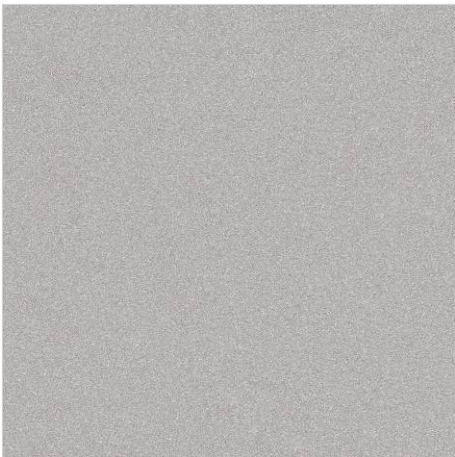


SILVER RUSTIC

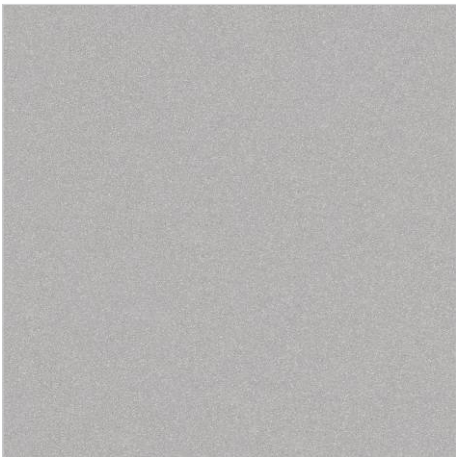




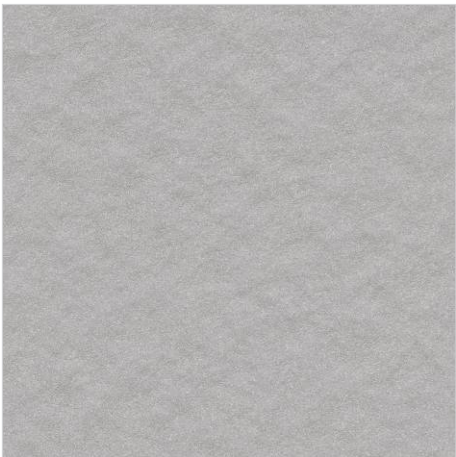
DOVE



DOVE CRYSTAL



DOVE MATT

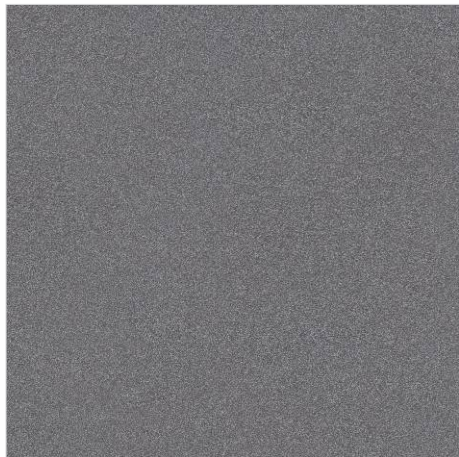


DOVE RUSTIC

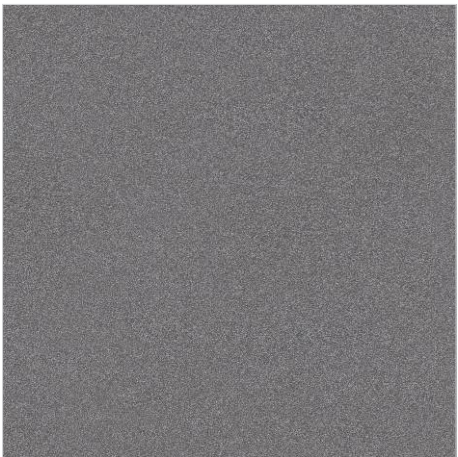




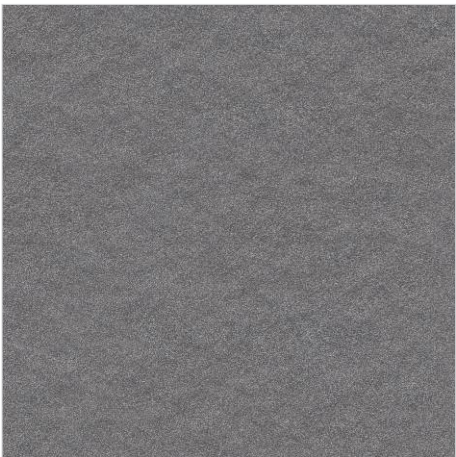
BLACK



BLACK CRYSTAL



BLACK MATT



BLACK RUSTIC



LOW WATER ABSORPTION



HIGH STRENGTH



ZERO MAINTENANCE

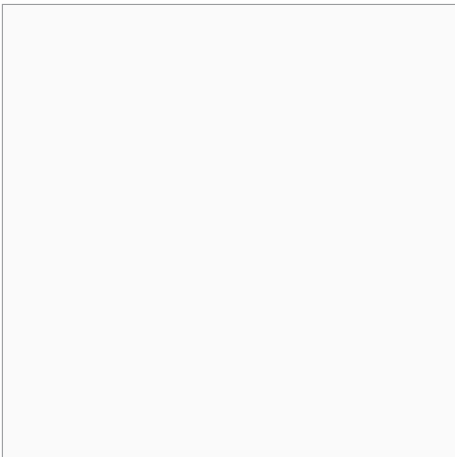


IMPACT RESISTANCE





SUPER WHITE



SUPER WHITE CRYSTAL



# FULL BODY



600x  
1200  
mm

Also Available

Step - 295x1200mm

Riser - 125x1200mm

SAND ●●●●●<sup>TM</sup>  
DUNE

ne<sup>ra</sup>

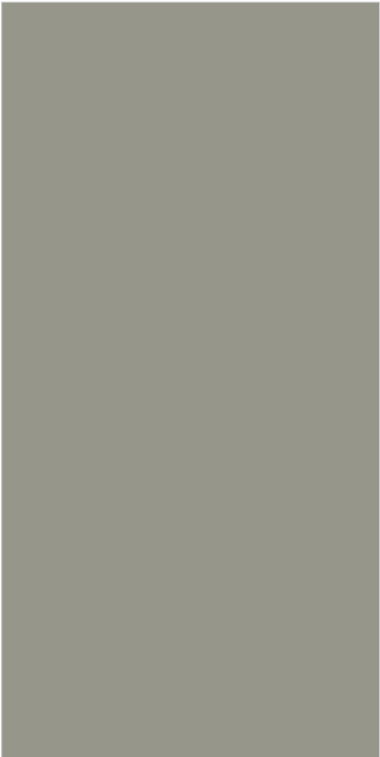








KOTA CRYSTAL



KOTA MATT

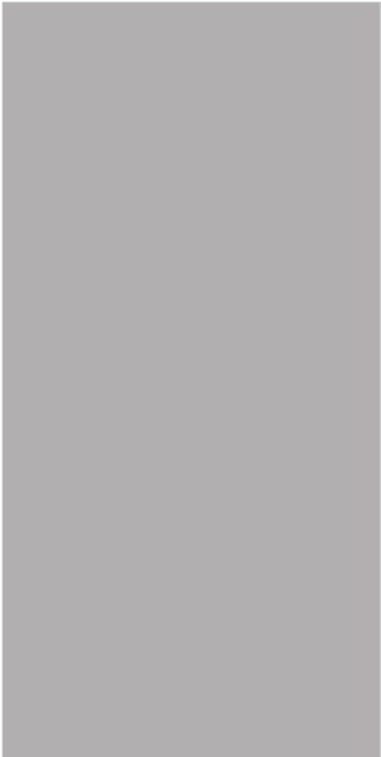




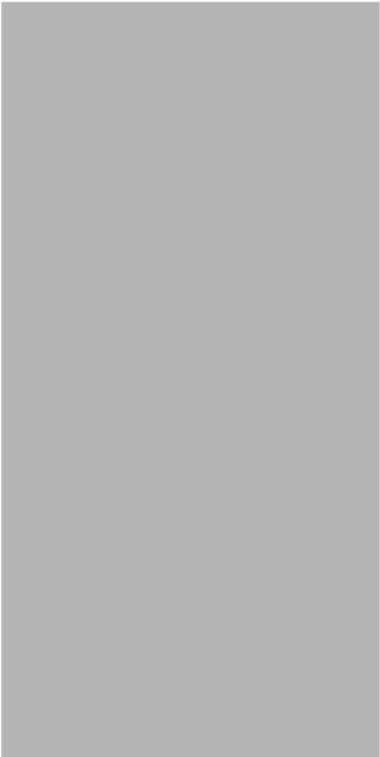




XL GREY



XL GREY CRYSTAL



XL GREY MATT





# QUARTZ

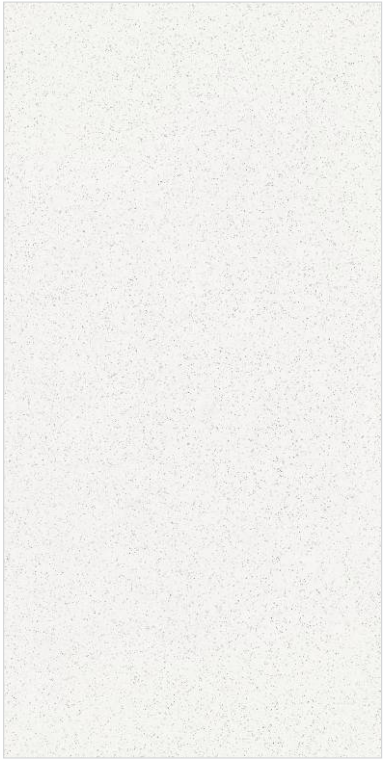




QUARTZ



QUARTZ CRYSTAL



QUARTZ MATT

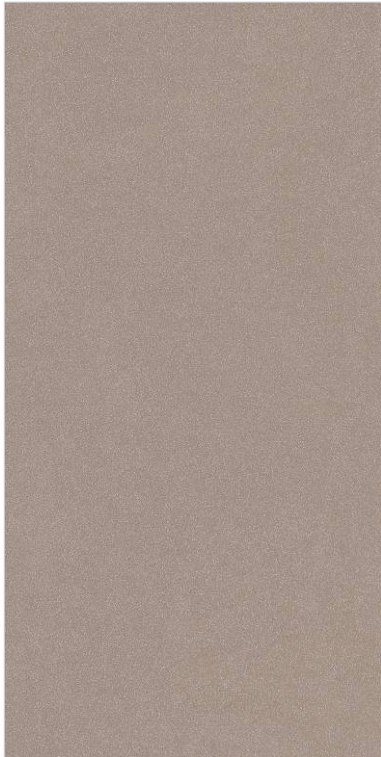




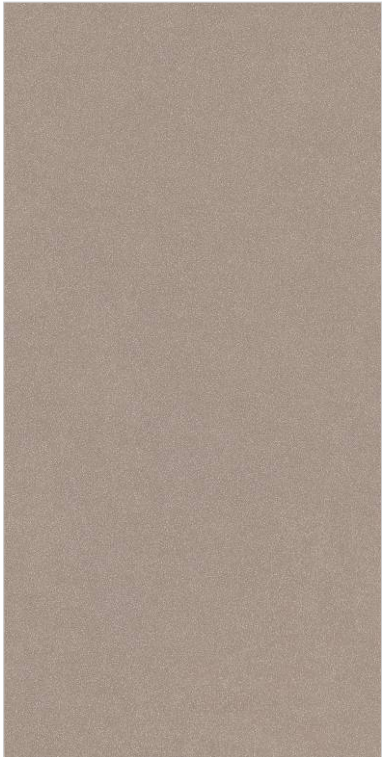




EARTH



EARTH CRYSTAL



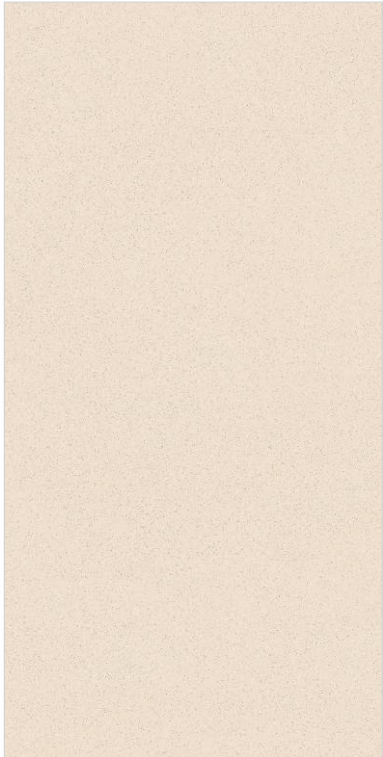
EARTH MATT



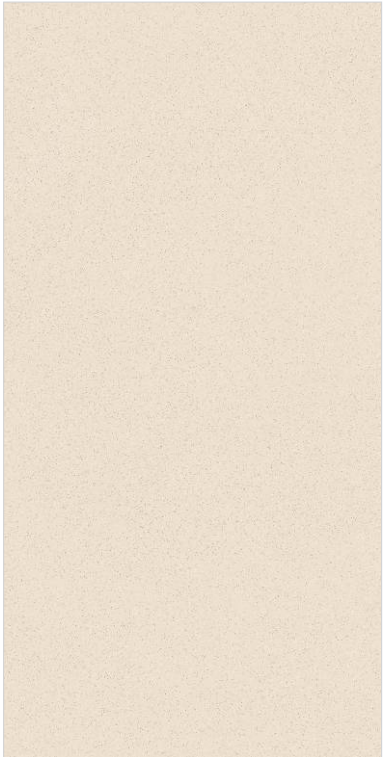




MIST



MIST CRYSTAL



MIST MATT



LOW WATER ABSORPTION



HIGH STRENGTH



ZERO MAINTENANCE



IMPACT RESISTANCE





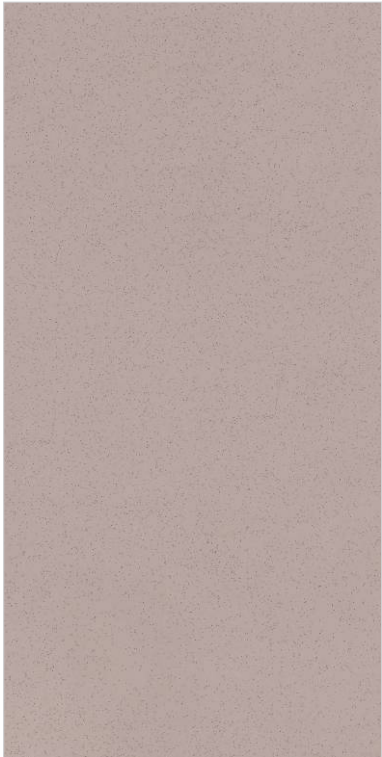




POLO



POLO CRYSTAL



POLO MATT





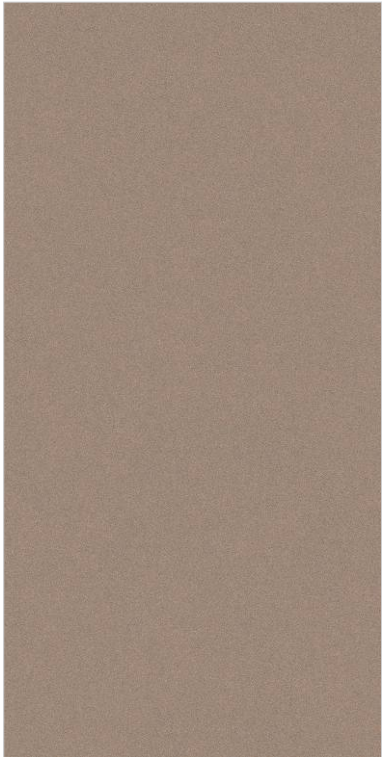




PULPIS



PULPIS CRYSTAL



PULPIS MATT





JET BLACK



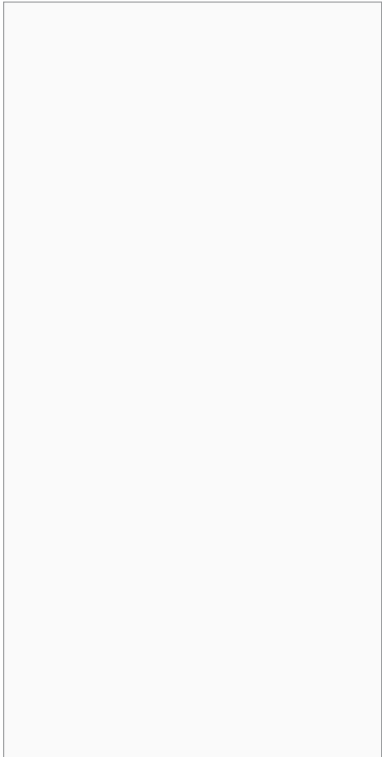
JET BLACK MATT





SUPER WHITE

41



SUPER WHITE CRYSTAL



LOW WATER ABSORPTION



HIGH STRENGTH



ZERO MAINTENANCE



IMPACT RESISTANCE



M E M O R Y



L I F E T I M E





600x  
600  
mm

Also Available  
295x600mm

SAND ●●●●●●™  
DUNE  
FULL BODY

FULL  
BODY

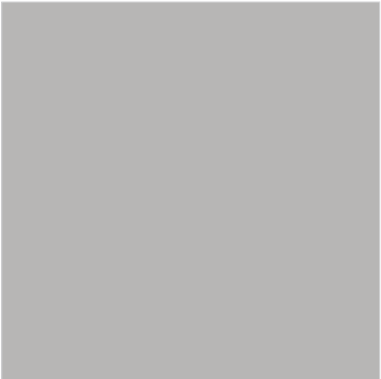




XL GREY

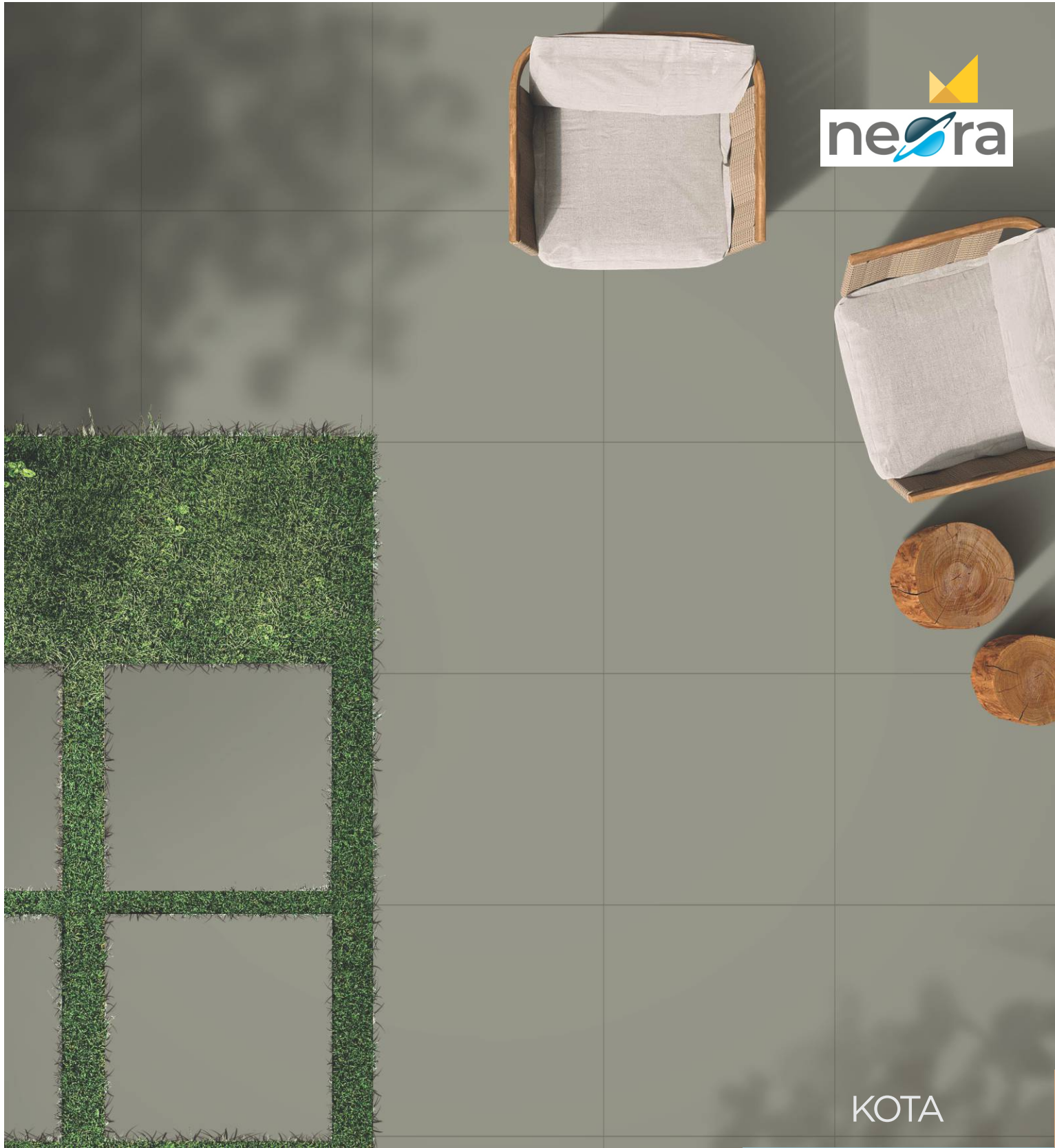


XL GREY CRYSTAL



XL GREY MATT





KOTA CRYSTAL



KOTA MATT





# QUARTZ



QUARTZ CRYSTAL



QUARTZ MATT

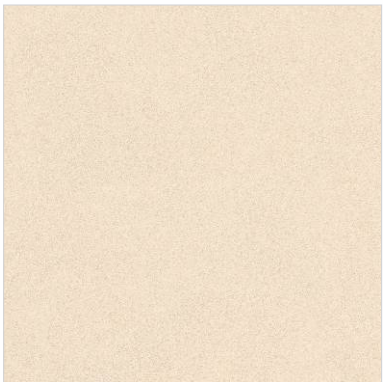




BEIGE



BEIGE CRYSTAL



BEIGE MATT



LOW WATER ABSORPTION



HIGH STRENGTH



ZERO MAINTENANCE

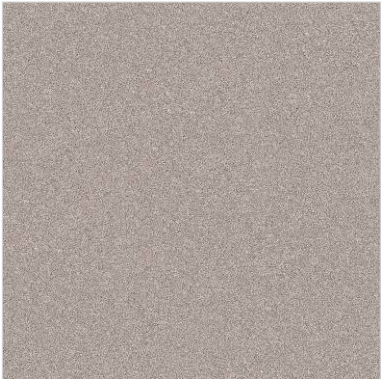


IMPACT RESISTANCE

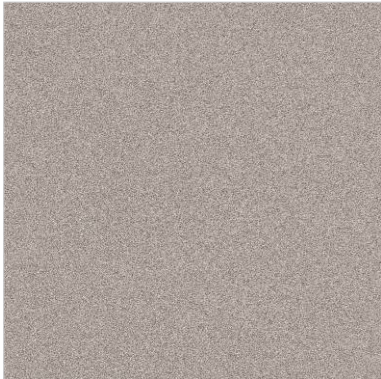




MOCHA



MOCHA CRYSTAL



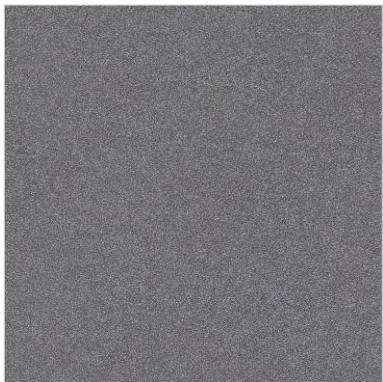
MOCHA MATT



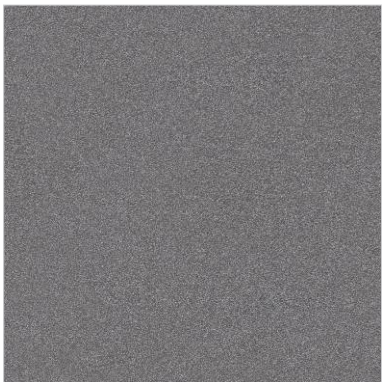


BLACK

49



BLACK CRYSTAL



BLACK MATT



LOW WATER ABSORPTION



HIGH STRENGTH



ZERO MAINTENANCE

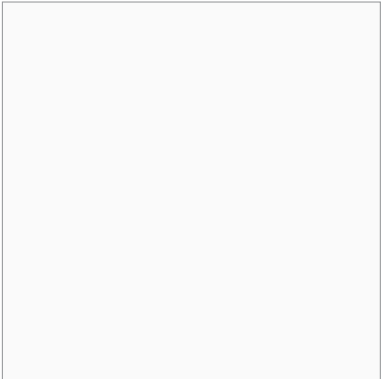


IMPACT RESISTANCE





SUPER WHITE



SUPER WHITE CRYSTAL





TECHNICAL SPECIFICATION

TECHNICAL DETAILS	STANDARD AS PER ISO-13006/EN176 GROUP Bla	MEAN VALUE OF MOZART FULL BODY & DOUBLE CHARGE VITRIFIED TILES	METHOD OF TEST
Deviation In Length & Width	± 0.60%	± 0.10%	ISO-10545-2
Deviation In Thickness	± 5.00%	± 2.00%	ISO-10545-2
Straightness Of Sides	± 0.50%	± 0.10%	ISO-10545-2
Rectangularity	± 0.60%	± 0.10%	ISO-10545-2
Surface Flatness	± 0.50%	± 0.10%	ISO-10545-2
Glossiness	Gloss Meter	Min. 90%	Glossometer
Water Absorption	≤ 0.50%	E ≤ 0.05%	ISO-10545-3
Breaking Strength	1300 N	2000 N	ISO-10545-4
Abrasion Resistance	Max. 175mm <sup>3</sup>	Max. 145mm <sup>3</sup>	ISO-10545-6
Moh's Hardness	Min. 6	≥ 6*	EN101
Frost Resistance	Frost Proof	Frost Proof	ISO-10545-12
Thermal Shock	No Damage	No Damage	ISO-10545-9
Moisture Expansion	Nil	Nil	ISO-10545-10
Thermal Expansion	< 9 x 10 <sup>-6</sup>	< 6 x 10 <sup>-6</sup>	ISO-10545-8
Resistance of House Hold Chemical	No Damage	No Damage*	ISO-10545-13
Stain Resistance	Resistance	Resistance*	ISO-10545-14
Slip Resistance(friction Co Efficient)	> 0.40	> 0.40	ISO-10545-17

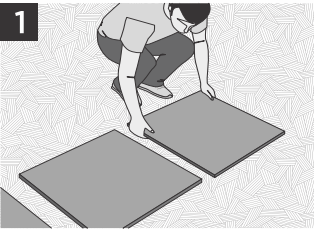
**DISCLAIMER:** Mozart reserves the right to delete & amend either totally or partially, any of the colors, shapes, sizes, references and other technical specifications contained in this catalogue at anytime. The colors of tiles shown in this catalogue are purely illustrative and limited to printing process. Please refer actual sample before final selection. The details of sizes, colors and references should be verified for typographical errors.

PACKING DETAILS

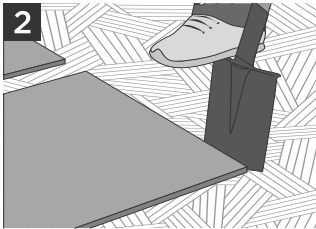
	SIZE	Pcs. / Box	Weight / Box (Approx.)	Coverage Area / Box
	800x800mm	3 pcs.	42 kgs.	20.67/ft² or 1.92/mtr²
	600x1200mm	2 pcs.	32 kgs.	15.5/ft² or 1.44/mtr²
	600x600mm	4 pcs.	29 kgs.	15.5/ft² or 1.44/mtr²
	800x1200mm	2 pcs.	42 kgs.	20.67/ft² or 1.92/mtr²
	800x800mm	3 pcs.	39 kgs.	20.67/ft² or 1.92/mtr²
	600x600mm	4 pcs.	28 kgs.	15.5/ft² or 1.44/mtr²



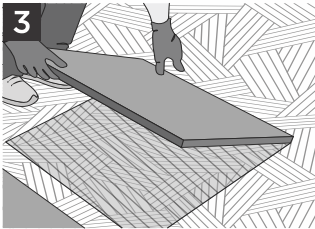
## Outdoor Laying Instructions



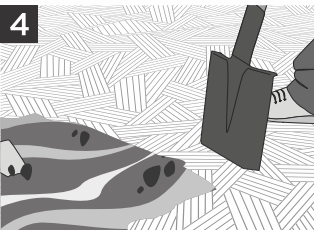
Beforehand arrange the Mozart Tiles on the ground to define the correct positioning and distance between the footsteps.



Mark the perimeter of the tile by making a few grooves in the ground.



Lift the tile and then remove the top layer of grass.



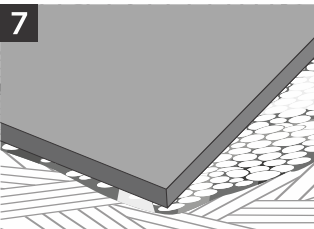
Remove the top layer of the turf (to a depth of approx. 6-7 cm).



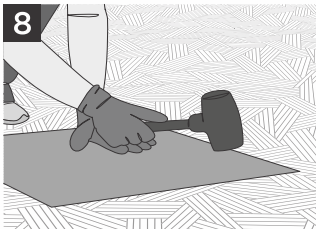
Clean and level the underlying ground.



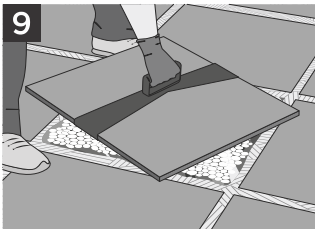
Add a layer of gravel to smooth off the sub-bed and provide more stability.



Place the tile above the ground level by about 0.5/1 cm to allow the subsequent natural leveling to the ground.



Compact the edges to lay the tile flush to the ground.



In the case where the leveling is not optimal, lift the tile with the appropriate crimping tool and reposition it correctly.

### USES



Driveway flooring



Outdoor Stairs



Residential Areas



Footpath



Swimming Pool



Gazebo & Terraces



Commercial Areas

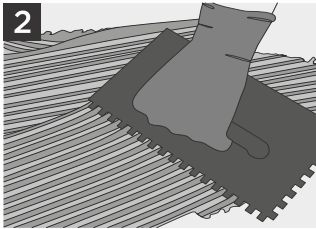


Garden, Courtyard Or Patio

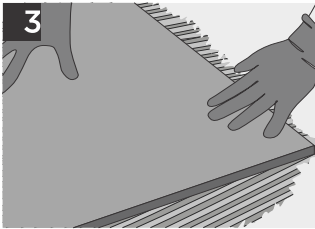
## Indoor Laying Instructions



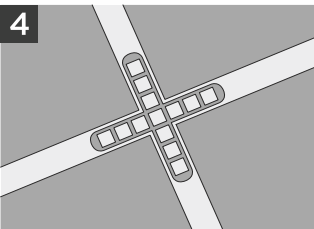
After having made the screed according to the best working standards, it needs a good surface cleaning before proceeding with the laying.



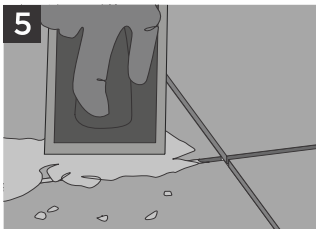
Spread the glue evenly to ensure a perfectly plane surface.



When laying, it is recommended to check that the slab has adhered correctly to the glue layer.



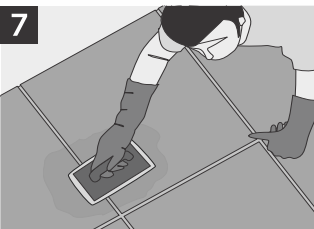
Mozart is squared and single work-size and can therefore be laid with a 3 mm plus spacer (plus spacer 3mm=Joint 3/4mm).



After laying, grout the floor.



Wash the first layer of grout residue carefully after grouting.



A final buffered acid wash must be done to remove any invisible grout residues.